

Sumitomo Corporation

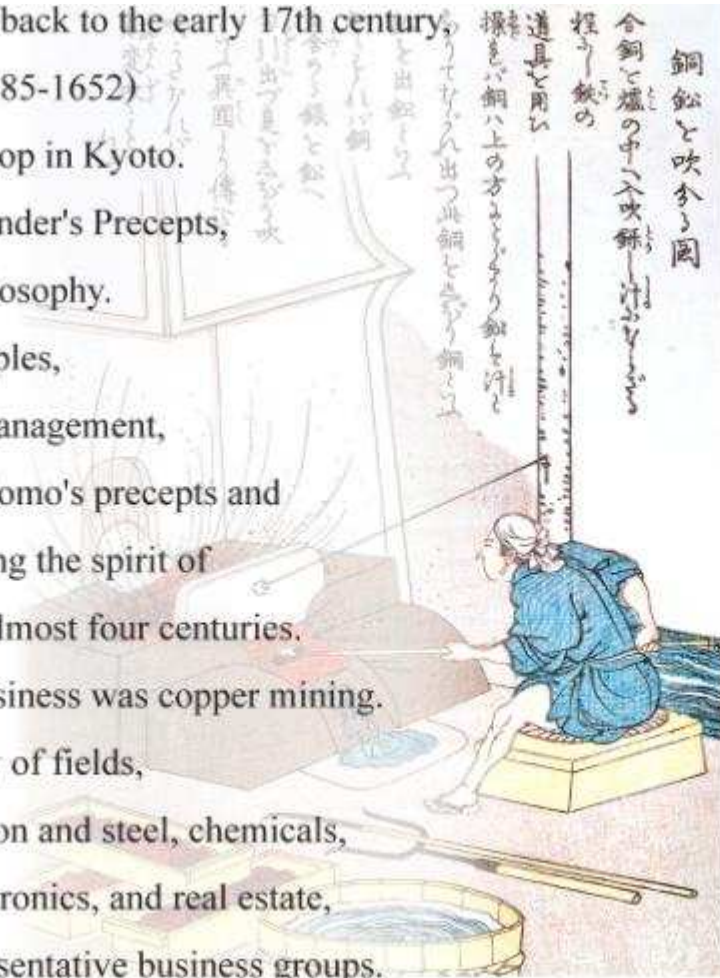
Logistics & Insurance Business Division



History

The history of Sumitomo dates back to the early 17th century when Masatomo Sumitomo (1585-1652) opened a book and medicine shop in Kyoto. Later in life, he created his Founder's Precepts, which laid out his business philosophy.

The Sumitomo Business Principles, stressing integrity and sound management, were originally based on Masatomo's precepts and have been a central force shaping the spirit of each Sumitomo Company for almost four centuries. Sumitomo's initial mainstay business was copper mining. It later diversified into a variety of fields, including finance, insurance, iron and steel, chemicals, heavy machinery, electric, electronics, and real estate, and is now one of Japan's representative business groups.



Sumitomo's original copper refining method.

Sumitomo Companies
Sumitomo Chemical Co., Ltd.
Sumitomo Heavy Industries, Ltd.
Sumitomo Mitsui Banking Corporation
Sumitomo Metal Industries, Ltd.
Sumitomo Metal Mining Co., Ltd.
Sumitomo Corporation
The Sumitomo Trust & Banking Co., Ltd.
Sumitomo Life Insurance Co.
Sumitomo Coal Mining Co., Ltd.
The Sumitomo Warehouse Co., Ltd.
Sumitomo Electric Industries, Ltd.
Mitsui Sumitomo Insurance Co., Ltd.
Nippon Sheet Glass Co., Ltd.
NEC Corporation
Sumitomo Realty & Development Co., Ltd.
Sumitomo Osaka Cement Co., Ltd.
Sumitomo Light Metal Industries, Ltd.
Sumitomo Mitsui Construction Co., Ltd.
Sumitomo Bakelite Co., Ltd.
Sumitomo Forestry Co., Ltd.

Corporate Profile



Sumitomo Corporation Head Office

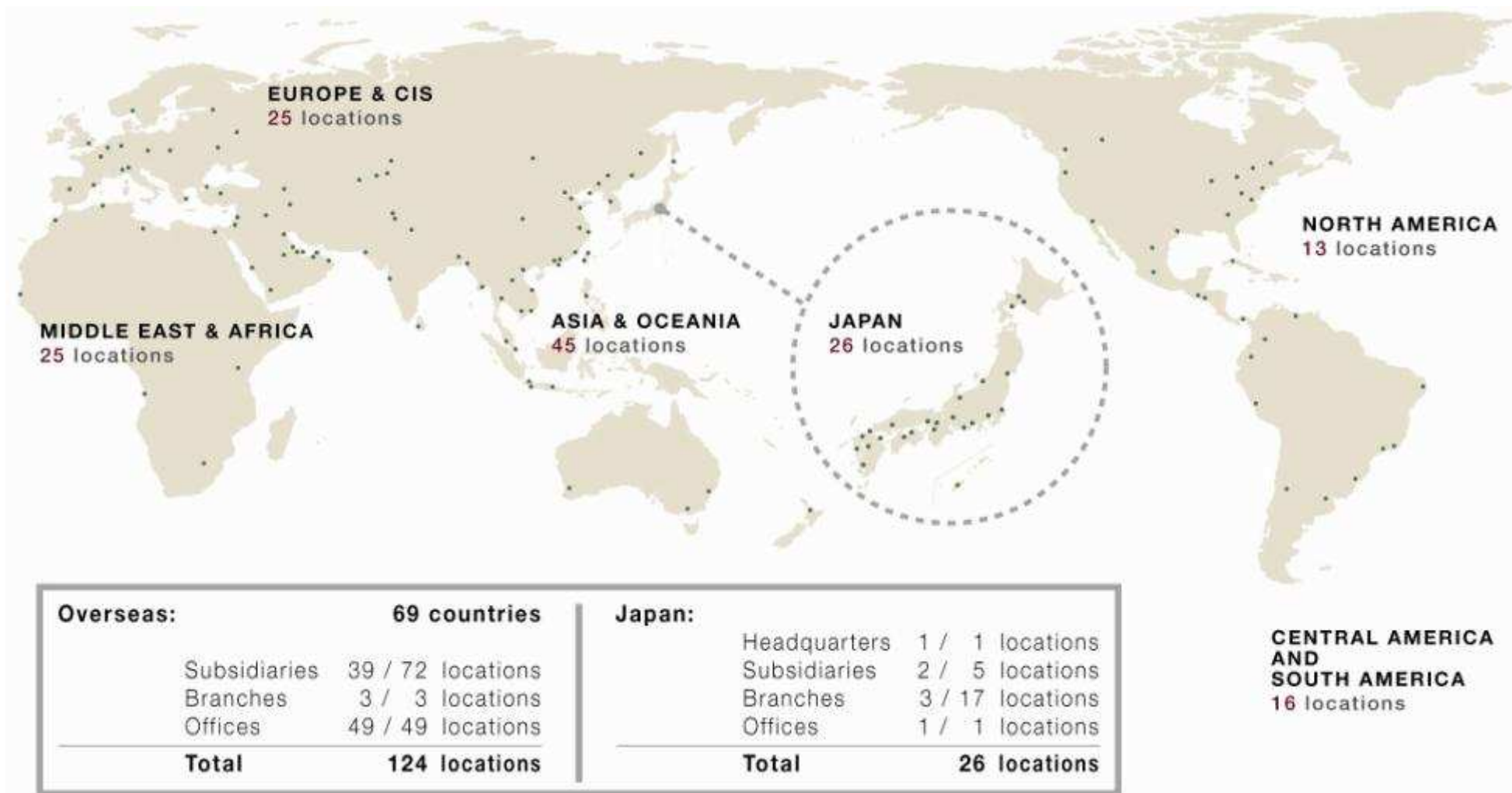
Sumitomo Corporation is one of the leading firms in the Japanese business arena, with its business continuously expanding into a diverse range of products and services.

Since its foundation in the early 17th century, the “Sumitomo” Brand has represented stability and trust.

The company’s reputation has been built upon the strong foundation of its long business tradition.

Date of Establishment	December 24, 1919
Number of Offices	26 in Japan, 122 overseas (65 countries)
Consolidated Subsidiaries	196 in Japan, 410 overseas
Associated Companies	80 in Japan, 150 overseas
Total Trading Transactions :	EUR 71.8 billion
Net Income :	EUR 1.5 billion
Total Assets :	EUR 47.0 billion
Shareholders’ Equity:	EUR 9.3 billion
Number of Employees :	5,000 (70,000 including consolidated subsidiaries.)

Global Network

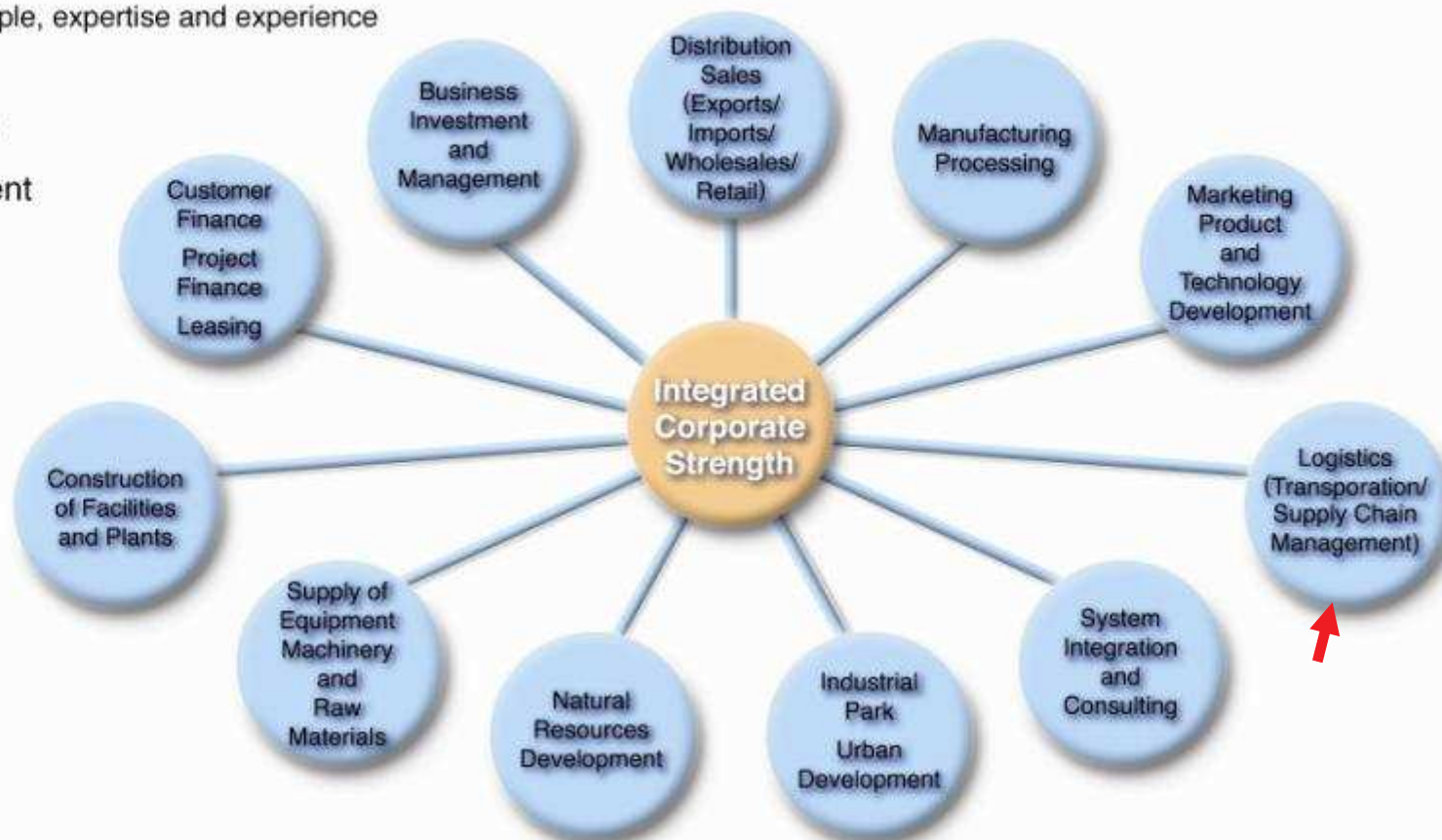


Integrated Corporate Strength

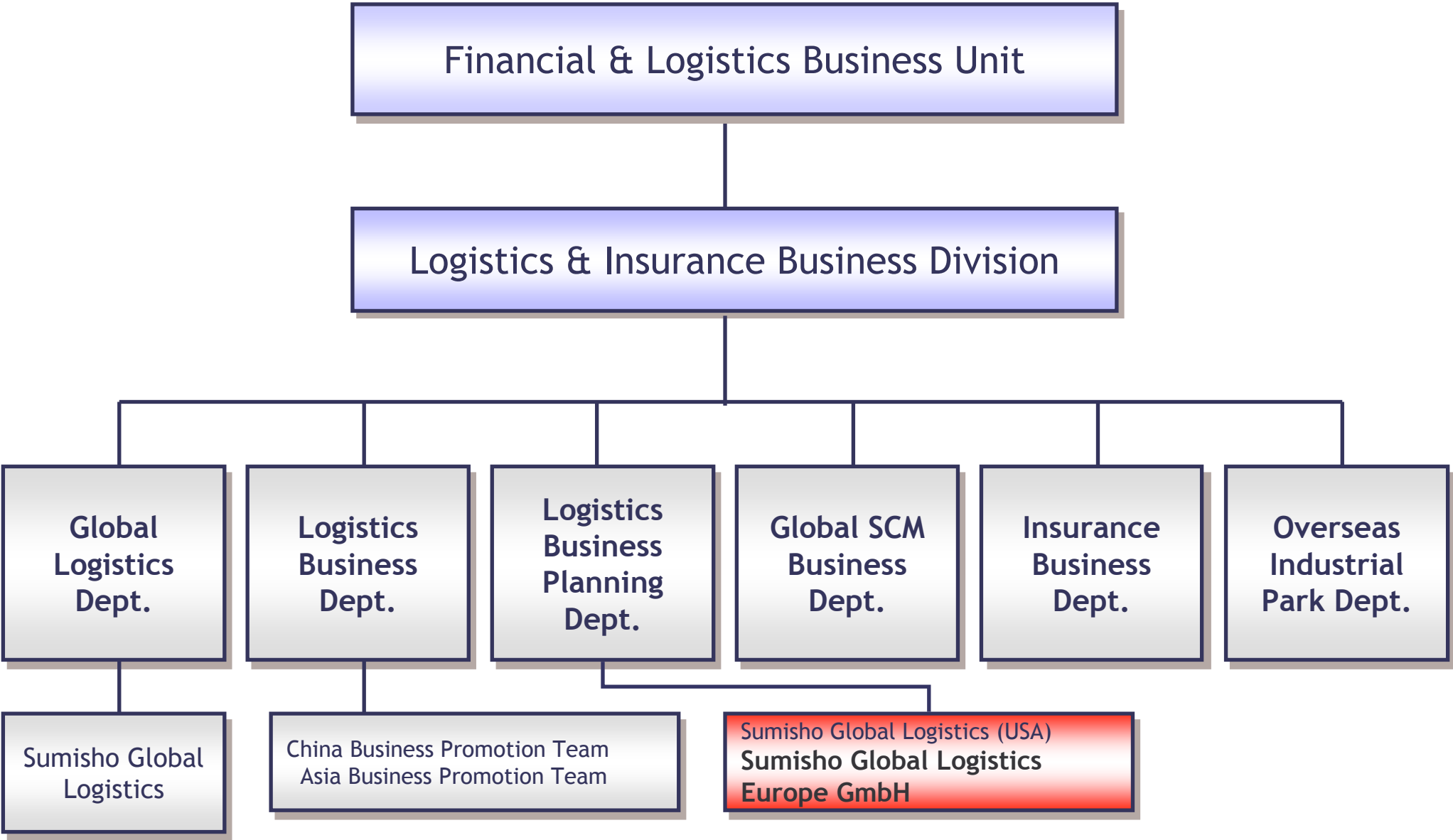
- T**rust Built over many years based on Sumitomo business philosophy
- G**lobal Network 155 offices and over 790 subsidiaries and affiliates
- G**lobal Relations Over 100,000 customers, suppliers and other business partners
- I**ntellectual Capital People, expertise and experience

Our capabilities in :

- Business development
- Logistics solutions
- Financial services
- IT solutions
- Risk management
- Intelligence gathering and analysis

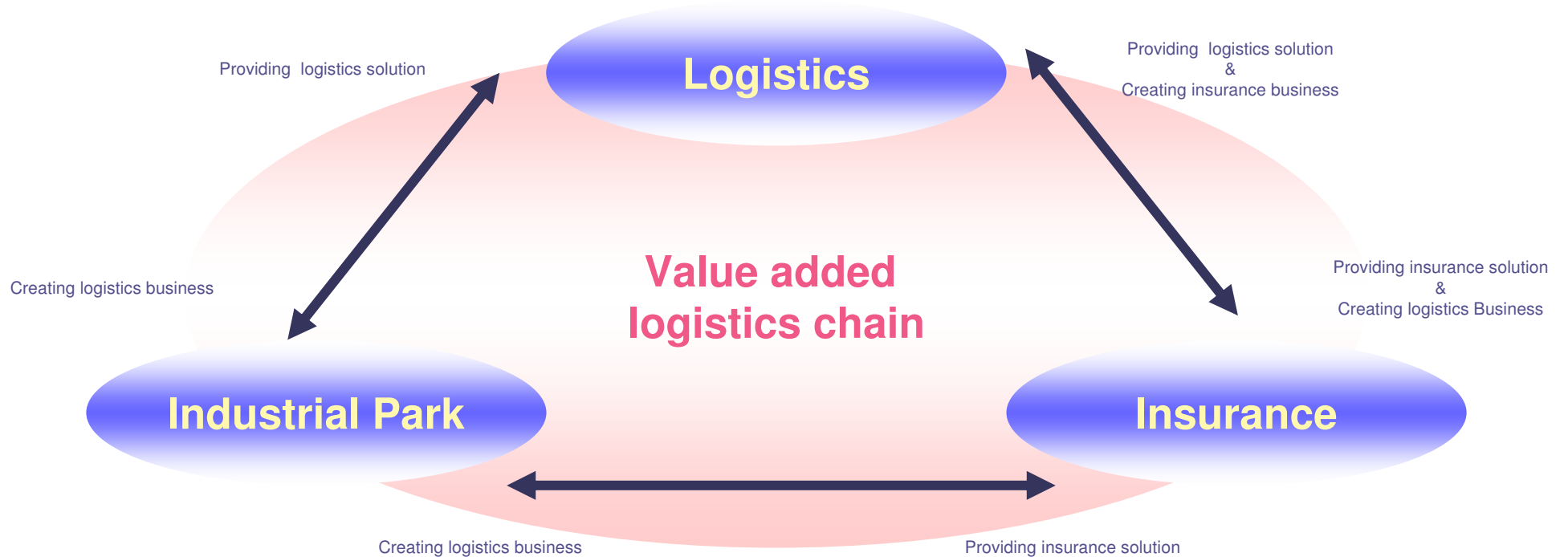


Introduction of Our Logistics Division



Strategy

Logistics & Insurance Business Division consists of 3 business lines, Logistics, Insurance and Industrial Park. Each business line cooperates together and develops value added logistics chain.



Logistics and Insurance Business Division

- Global Network -



◆ Logistics Operation / NVOCC

● Industrial Park

● Insurance Business

SUBSIDIARIES

LOGISTICS BUSINESS

- Sumisho Global Logistics Co., Ltd. (Japan)
- Sumisho Global Logistics (Shanghai) Co., Ltd. (China)
- Wuxi Sumisho Hi-Tech Logistics Co., Ltd. (China)
- Shanghai Dazhong Sagawa Logistics Co., Ltd. (China)
- Zero SCM Logistics (Beijing) Co., Ltd. (China)
- Qingdao Sankyu Asia-Pacific Co., Ltd. (China)
- Chongqing Sumisho Yunxin Logistics Co., Ltd. (China)
- Nanjing CMSC Logistics Co., Ltd. (China)
- Sumisho Global Logistics (Thailand) Co., Ltd. (Thailand)
- P.T. Indo Summit Logistics (Indonesia)
- Dragon Logistics Co., Ltd. (Vietnam)
- Summit Logitech Korea, Ltd. (Korea)
- AR Summit L.L.C. (UAE)

INSURANCE BUSINESS

- Bluewell Corporation (Japan)
- Bluewell Insurance Brokers (Japan)
- Bluewell Hong Kong Ltd. (Hong Kong)
- Bluewell Insurance (Singapore) Pte Ltd. (Singapore)
- Bluewell (U.S.A.) Inc. (New York U.S.A.)
- Bluewell Reinsurance (Bermuda) Co., Ltd. (Bermuda)

Our Global Logistics Network

GLOBAL NETWORK / Sumitrans

- Sumitrans Corporation New York, Seattle, Los Angeles, Raleigh (U.S.A)
- Sumisho Global Logistics (HK) Ltd. (Hong Kong)
- Sumisho Global Logistics South China Co., Ltd. (China)
- PT. Senatrans Utama (Indonesia)
- Philippine Sumitrans Logistics, Ins. (Philippines)
- SGL Europe GmbH Dusseldorf, London, Milano, Krakow, Prague, Plzen, Budapest

INDUSTRIAL PARK

- Nava Nakorn Industrial Estate (Thailand)
- East Jakarta Industrial Park (Indonesia)
- First Philippine Industrial Park (Philippines)
- Thang Long Industrial Park (Vietnam)
- Suryacipta City of Industry (Indonesia)
- Pasuruan Industrial Estate Rembang (Indonesia)
- Qingdao Industrial Estate (China)
- Guangzhou Economic & Tech. Develop. Zone (China)
- Tanzhou Industrial Park Tanzhou (China)
- Dongli Economic Development Area of Tianjin (China)
- Sheyang Economic and Tech. Develop. Zone (China)

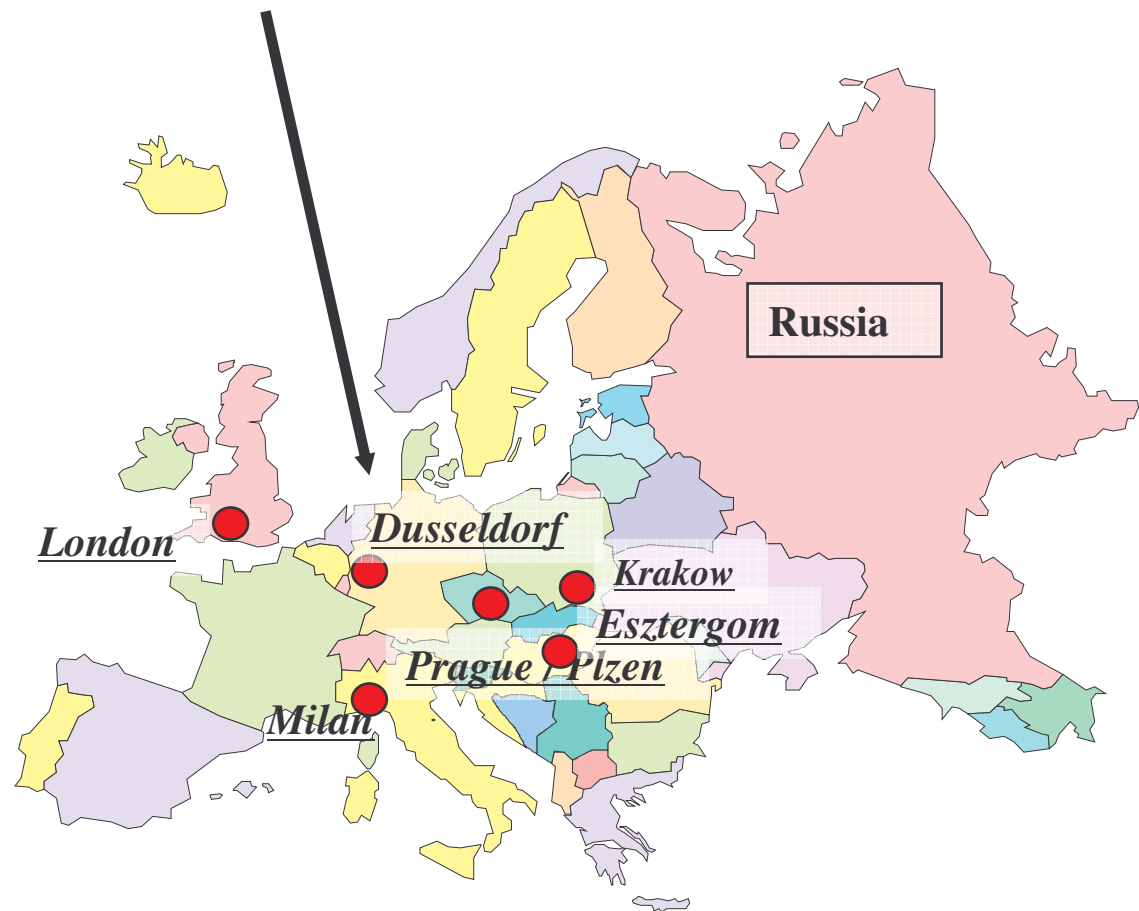
Sumisho Global Logistics Europe GmbH Activities

SGL Europe GmbH Dusseldorf office is taking care of the total logistics services in Europe. London office is mainly handling the Atlantic trade & total logistics solution service including JIT operation with independent IT tool. Hungary organization has started from 1999 to support Automotive industry logistics. Italy Branch is aiming to control the Mediterranean business. Czech Branch has been established in January 2007 to concentrate parts procurement logistics operation.

<Logistics service menu>

- NVOCC service
- Project Transportation
- Customs clearance
- Purchase & Sales Management
- Inventory Control
- JIT operation
- Total solution service

- Annual Turnover: EUR 70Mil
- Handling Volume in 2007 :
15,000TEU + 50,000FT



SGL Europe GmbH Profile



- | | |
|------------------------------------|--|
| 1. Establishment: | 1991 |
| 2. Capital: | EUR 1,024,000.- |
| 3. Shareholders: | Sumitomo Corporation Europe Ltd. 60.0%
Sumitomo Corporation 40.0% |
| 4. Organisation: | |
| < Düsseldorf Head Office > | Gorg-Glock-Str. 8, 40474 Düsseldorf, Germany
Tel: +49-(0)211-4570-290, Fax: +49-(0)211-4570-295 |
| < London Branch Office > | Vintners' Place, 68 Upper Thames Street, London EC4V 3BJ, U.K.
Tel: +44-(0)20-7246-3681, Fax: +44-(0)20-7246-3937 |
| < Budapest Representative Office > | c/o D&V 2000 kft H-2500 Esztergom Ipari Park Dobogokoi ut35 , Hungary
Tel: +36-33-542-440, Fax: +36-33-542-445 |
| <Milano Branch Office> | Via Fantoli 7, 20138 Milano, Italy
Tel: +39-02-5801-8466, Fax: +39-02-5801-8126 |
| <Czech Branch Office> | i) Skretova 12, 120 00 Praha 2, Czech Republic
ii) Podnikatelska ul. 41 301 00 Plzen, Czech Republic |
- * In the addition to the above registered office, we have the following operational base as Sumitrans Europe GmbH.
- <Krakow> Oddzial w Polsce, Krakow Office, 23 Lubicz St, 31-503 Krakow, Poland
(in Sumitomo Corporation Europe Plc. Krakow Office)

SGL Europe GmbH, Czech Branch

- Company name : Sumisho Global Logistics Europe GmbH, Czech Branch
- Start of Operation : June 2006
- Formal Establishment : January 2007
- Employee : 20 people (including 4 Japanese representatives)
- Warehouse : 7,600M2 + 8,800M2
- Place : Borska Pole, Plzen, Czech Republic
- Main business
 - ① Providing synchronized parts feeding logistics
 - ② Consulting to improve logistics mechanism of customers
- Warehouse operation
 - Partner : Fujitrans Corporation
 - Office staff : 16 people (including 3 Japanese representatives)
 - Warehouse Operators : 110
- Web presentation
www.sgleurope.com



Sumitomo Corporation
Logistics & Insurance Business Div.



Thank you!

Michael Rada – Manager

+420-602-457442

Michael.Rada@sgleurope.com
